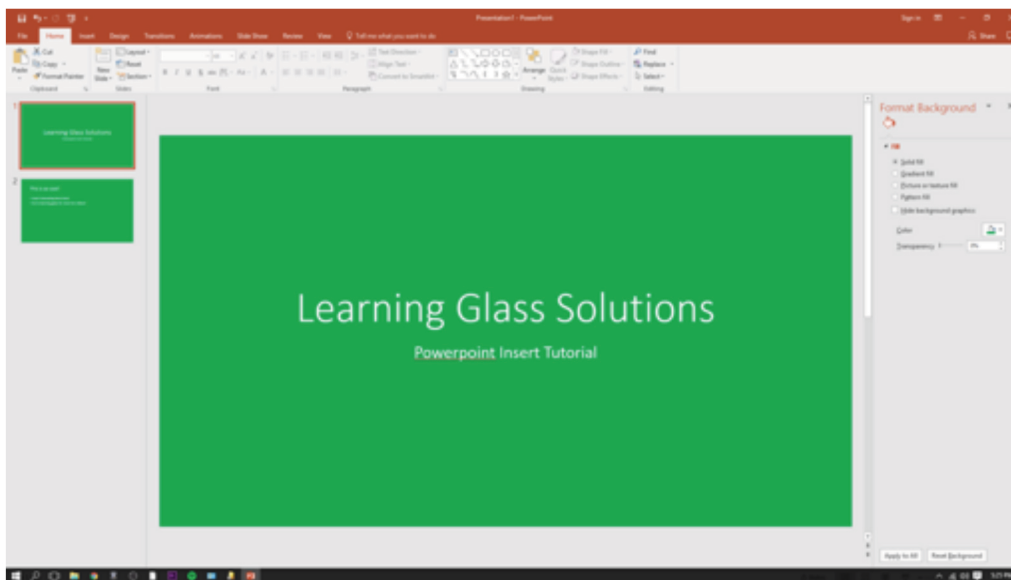


Setting up PowerPoint for Learning Glass

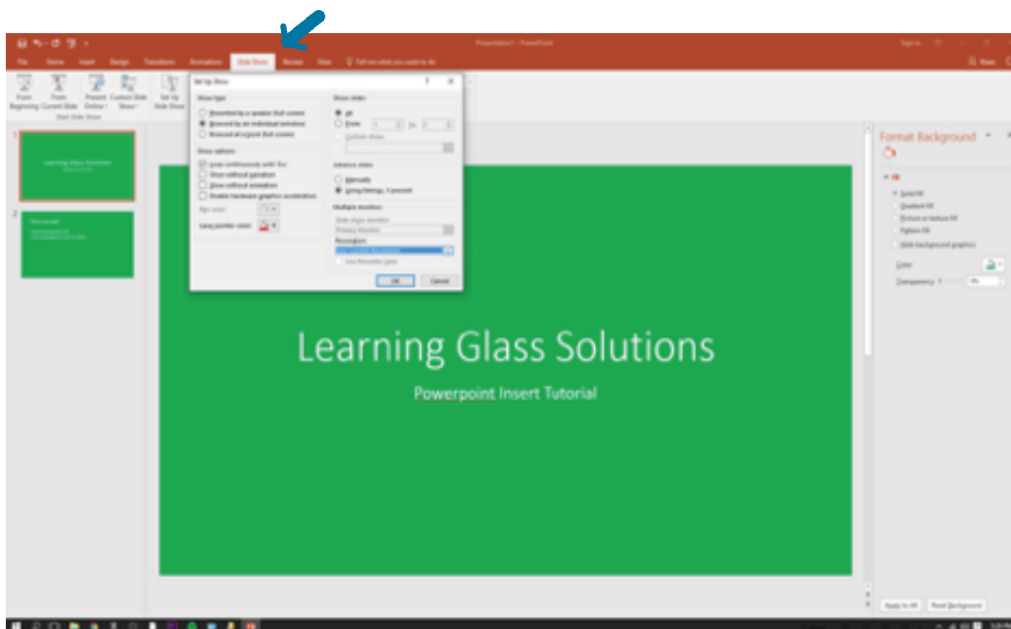
This tutorial will help you format PowerPoint slides for electronic insertion with the Learning Glass and digital switching software such as OBS and Wirecast. We will be using the latest edition of Microsoft office 2016 365 ed.

1. Format your PowerPoint the background of your slides to chroma green. Use white or a vibrant **contrast** color to create text, charts, or other images.

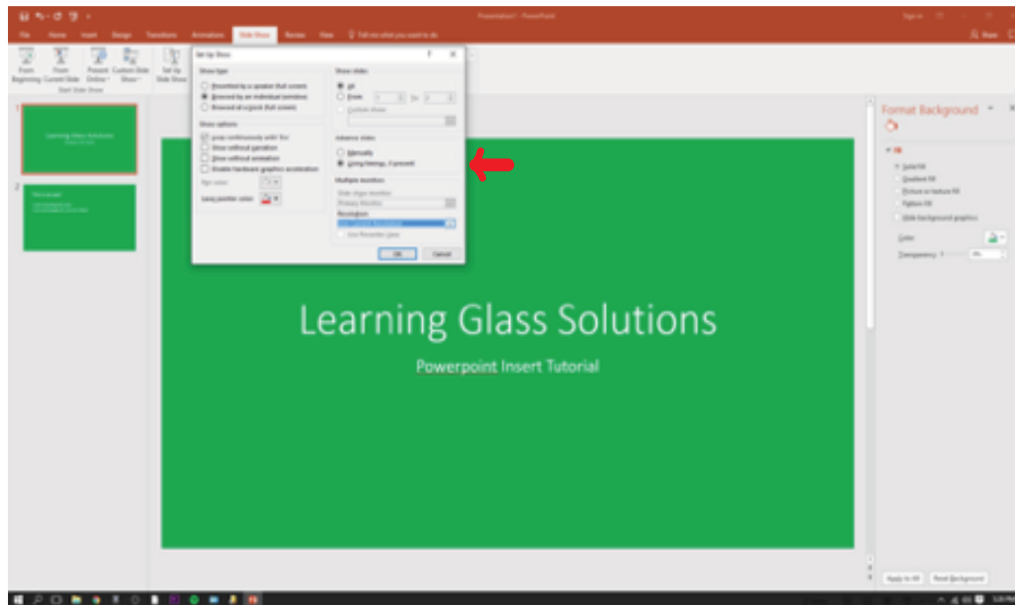
IMPORTANT: THE GREEN BACKGROUND AND ANY SIMILAR GREEN COLOR WILL “KEY OUT” TO CREATE TRANSPARENCY.



2. Once you have prepared your slides, navigate to the slideshow settings at the top of the screen and click **Set Up Slideshow**.



3. In the pop-up window, under the Show Type settings, select **Browse by Individual** (Windows). This allows you to operate PowerPoint without taking up the full screen.



4. Run/Present slideshow as you would normally, using the monitor to orient you to the location of the slide for drawing, annotating or otherwise referencing the slide in your presentation.

TIP: If you have difficulty orienting yourself to the slide, try using a black dry erase marker to delineate the boundaries of the slide on the opposite (camera) side of the glass. It won't show against a black background.